

Call us if you're having trouble with garbage disposal!

West area 1 2 3 13 14 15 16

East area 4 5 6 7 8 9 10 11 12 17

Chiyoda Town Environment & Sewerage Division TEL.49-5200

Place your garbage at the collection station by 8:30 AM on the designated days.
Place in transparent/semi-transparent bags and close.

Burnable Waste

Twice a week

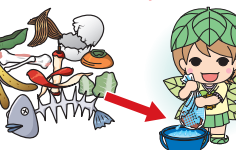
West area
Every week

Mon. Thu.

East area
Every week

Tue. Fri.

drain off any water



Kitchen waste



Bedding
(tear into small scraps)



Carpet, rugs
(3.3 m2 or more)



Grass & branches (dried)
(within 10cm diameter x 60cm length)

Tissue paper



Disposable diapers



*flush excrement
down the toilet

Non burnable Waste

Once every other week

West area
Every other week

Tue.

East area
Every other week

Thu.

Items less than 60 cm in length only.
Please take items greater than 60cm
to Oizumi garbage disposal center yourself.



Nail polish containers
(emptied of their contents)



Jewelry & accessories



Ski boots & ice skates



Resources

Once every other week

West area

Every other week

Tue.

East area

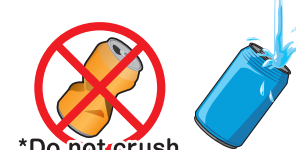
Every other week

Thu.

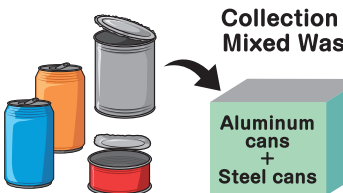
Aluminum cans/steel cans
Cookie tins/canned food cans



*Wash and dry the inside.
Do not crush.



*Do not crush



Collection of
Mixed Waste

Aluminum cans
+ Steel cans

Spray cans
Disposable lighters
Gas cassettes
Batteries

(including rechargeable batteries)

Please empty all
spray cans of their
contents.



Empty the contents

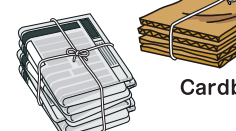
Place in the orange container.

Paper

Remove all parts not made
of paper. Dirty or foul-smelling
items are considered "Burnable Waste".

*Please bundle together
and tie with string.

Old magazines/books



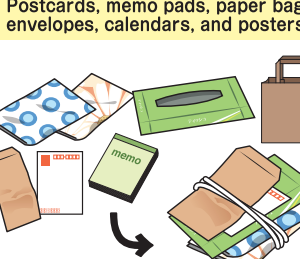
Old newspapers

Cardboard



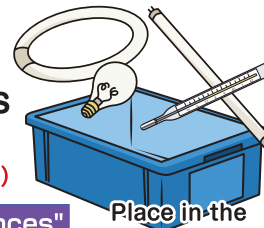
Wrapping paper,
tissue and food boxes, etc.

Postcards, memo pads, paper bags,
envelopes, calendars, and posters



Fluorescent lights
light bulbs
Mercury thermometers
LED light bulbs

(Can be placed in a protective cover)



Digital scales are "Small Appliances".
Place in the blue container.

Garbage that cannot be placed at the station (Large garbage)

Items you can bring to the Oizumi Town
Gainicho Garbage Disposal Center

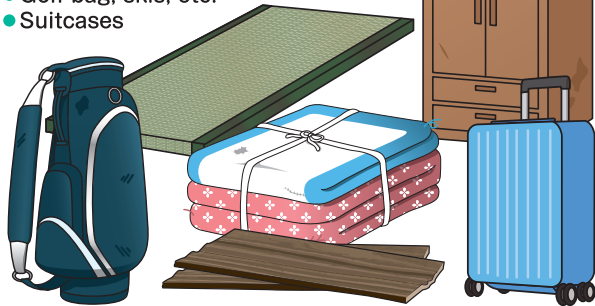
TEL : 0276-63-1266

*No need to contact in advance

9 : 00 AM to 11 : 30 AM 1 : 00 PM to 4 : 00 PM

- Planks
- Comforters, mattresses, tatami mats
(up to 6 sheets)
- Carpet, rugs (3.3 m2 or more)
- Chest of drawers, lounge suite
- Golf bag, skis, etc.
- Suitcases

Free



*When bringing your garbage, you will be required
to show a driver's license or other form of identification
(for address confirmation).

*Items that can be left at a garbage collection station,
tree branches, and the like, cannot be accepted.

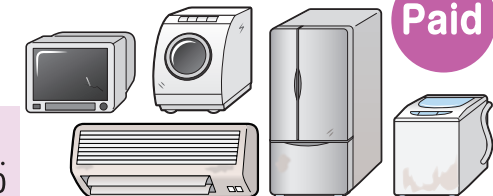
*Vehicles larger than the size of a small truck cannot
be accepted.

Items to be processed by a waste disposal company

The 4 primary household appliances

- Refrigerators (including freezers)
- Washing machines
(including dryers)
- Air conditioners
- Television sets

Inquiries
Kantaka Co., Ltd.
86-3230



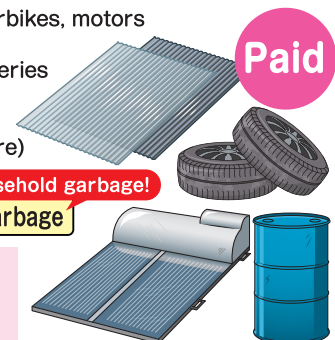
Paid

Other garbage

- Agricultural equipment, tires, motorbikes, motors
- Bath tubs, solar water heaters
- Drum cans
- Slate (roofing)
- Batteries
- Boilers and kerosene tanks
- Oil, waste oil, paints
- Galvanized sheet iron (PVC with wire)
- Stone, sand, soil, ash

Business and agriculture-related garbage

Inquiries
Tomo Environmental Service
Providers Association 62-7836



Paid

Concrete, blocks

Take to
recycling company

Free

Advance notice to Environ-
& Sewerage Division
required (TEL.49-5200)

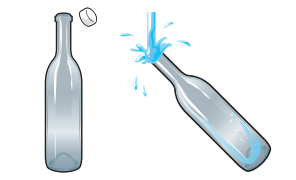
Glass bottles

(food and drink, cosmetics)

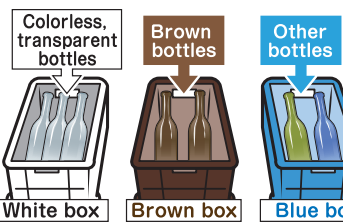
*Pesticide bottles cannot be accepted

Inquiries Tomo Environmental Service Pro-
viders Association (TEL : 62-7836)

*Please remove the lid and
wash and dry the inside.



*Please place bottles on their sides.



White box Brown box Blue box

Plastic bottles

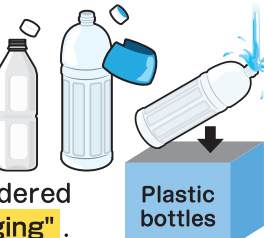
Transparent
drink bottles only



*Remove the lid and label,
then wash and dry the inside.

Colored bottles or bottles that
have contained anything other
than drinks are considered
"Combustible Garbage".

Plastic lids and labels are considered
"Plastic Containers and Packaging".



Please separate into bags according to the categories listed

Plastic Containers
and Packaging

Items with the plastic
recycling mark



Wash thoroughly



Plastic
Containers
and Packaging

White tray

Items that are
completely white



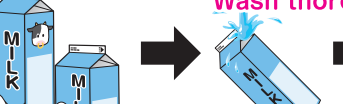
Wash thoroughly



White tray

Milk cartons

*Items with silver-colored
insides are burnable garbage



Wash thoroughly and flatten



Milk cartons

CAUTION!

If dirty items are
included, not only
does it deterio-
rate the quality
of the re-com-
mercialized
materials, it also
adds to the cost
of re-sorting
since the sorting
is done by hand!

*Always remember
to clean it before
you put it out!

Place your garbage at the collection station **by 8:30 AM on the designated days.**

Glass & Ceramics

Once a month
(2nd Wednesday of every month)

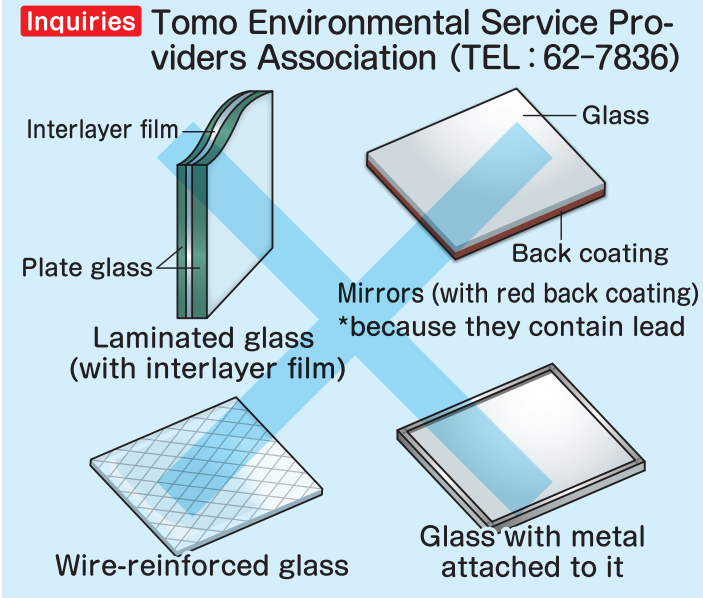
Glass items

- Please lightly wash off dirty items.
- When putting out multiple small items, please put them in a cardboard box or a plastic bag.
- Please wash off any mud.

Accepted (broken items are also OK)



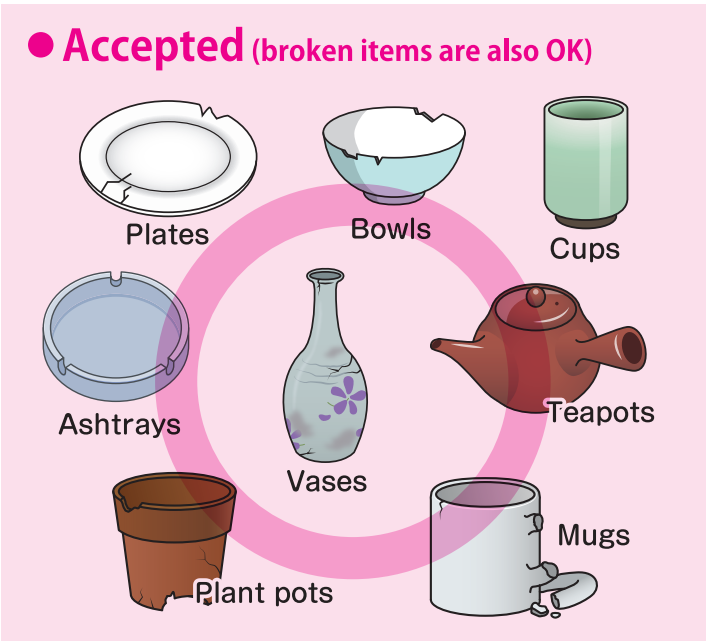
Not accepted



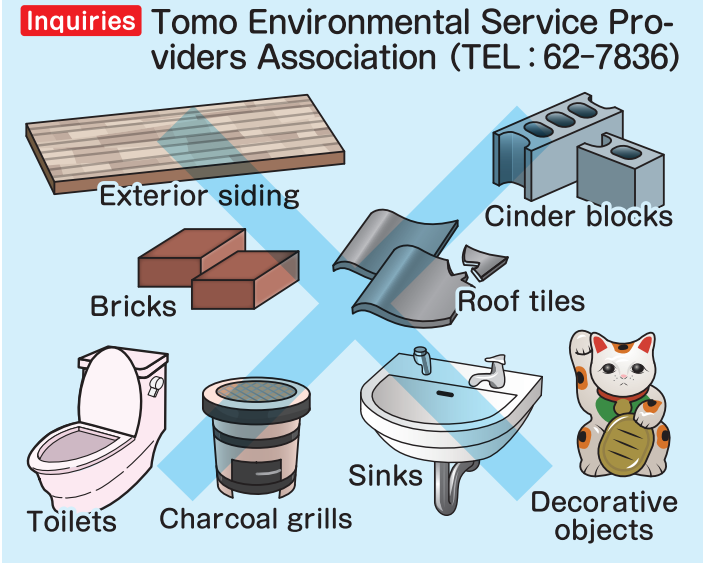
Ceramic items

- Please lightly wash off dirty items.
- When putting out multiple small items, please put them in a cardboard box or a plastic bag.
- Please wash off any mud.

Accepted (broken items are also OK)



Not accepted



Concrete items, tiles, and exterior wall materials cannot be accepted. Please empty bottles and wash them out before putting them out.

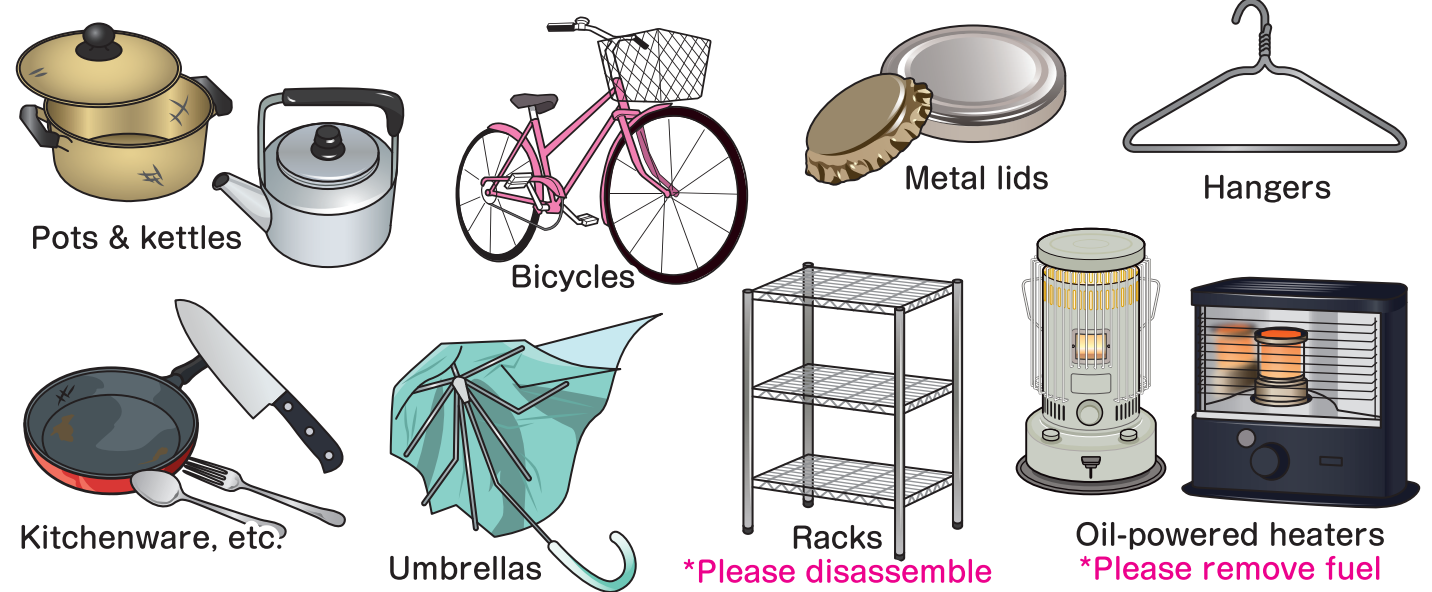
Place your garbage at the collection station **by 8:30 AM on the designated days.**

Metal & Small Appliances

Once a month
(3rd Wednesday of every month)

Metal

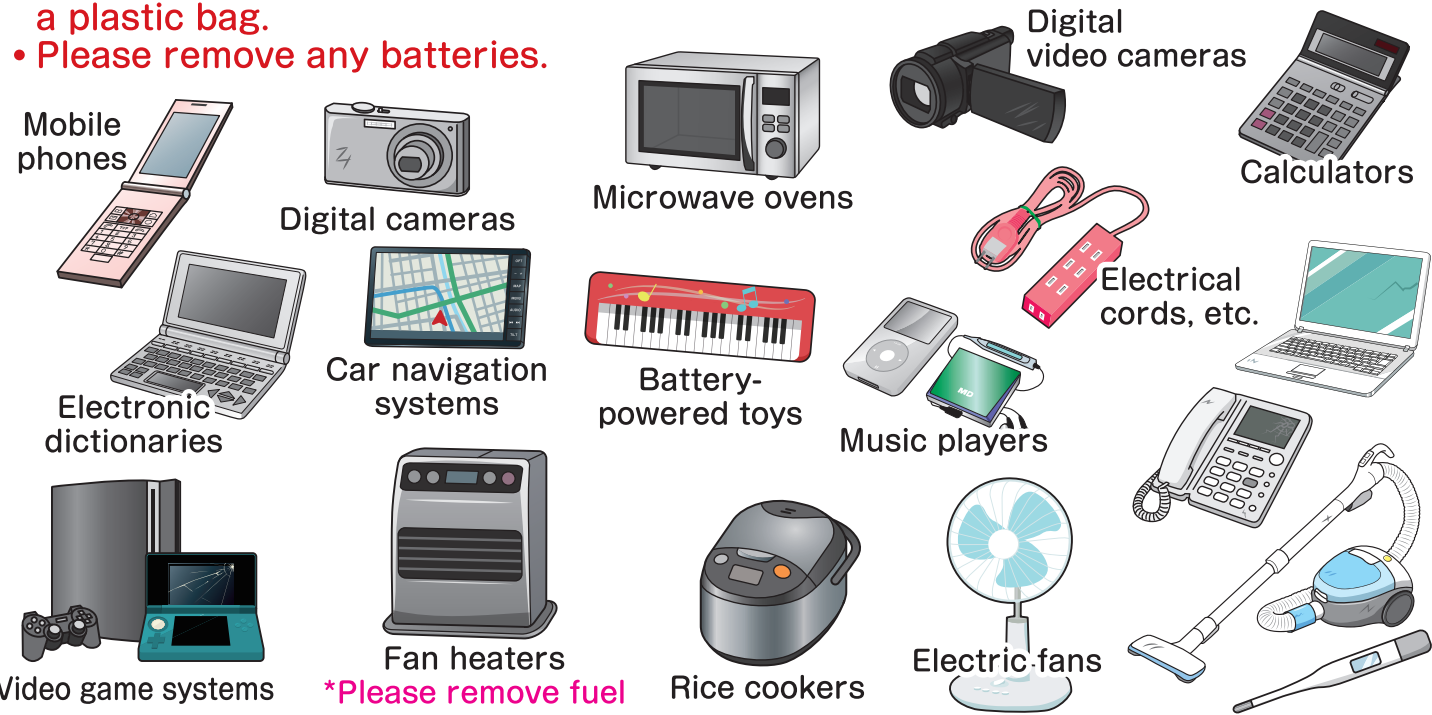
- Anything made of metal is okay.
- Please lightly wash off dirty items.
- When putting out multiple small items, please put them in a cardboard box or a plastic bag.



Small Appliances

- Household items are OK.
- When putting out multiple small items, please put them in a cardboard box or a plastic bag.
- Please remove any batteries.

*Televisions, washing machines, clothes dryers, refrigerators, and air conditioners cannot be disposed of this way.
Inquiries Kantaka Co., Ltd. (TEL : 86-3230)



There are lots and lots of things that fit in the Metal and Small Appliance categories! The items shown above are just a few examples.